



# AE-1450 EzStandard Prestain Blue

## 1. Safety warnings and precautions

Correct operations are necessary for safe use of this product. The complete instructions should be read and fully understood before attempting to use the product.

The Procedure described in the instruction manual applies only to the use for the intended purpose. Using the product for any purpose other than the intended use or in any manner other than that described in the manual is forbidden.

User shall be liable for all safety measures needed for any use other than specified in the manual.

## 2. Introduction

EzStandard Prestain Blue is composed by multiple covalent proteins with blue-dye. It is suitable for evaluations in transfer efficiencies of western blotting.

Note : It is not suitable for accurate molecular weight. We indicate measured molecular weight per every lot.

## 3. Buffer properties :

•Glycerol 35% (v/v)	•DTT 50mM
•SDS 2% (w/v)	•EDTA 2mM
•Tris 10mM	•BPB 0.005% (w/v)

\*This product includes regulated substance by PRTR law (Pollutant Release and Transfer Register Law). As it required MSDS, please ask ATTO.\*

## 4. Procedure

Get it warm by hands to melt a precipitant for about 1 minute. Briefly vortex it and apply it following the manual of electrophoresis system. After using, put it back to freezer immediately for storage.

## 5. Volume to Use

### Well width about 4.2mm

PAGEL/e-PAGEL 12well / 14well  
 3  $\mu$ L / Lane (Verification of blotting efficiency)  
 5  $\mu$ L / Lane (Verification of separation )

### Well width about 2.9mm

PAGEL/e-PAGEL 18well c-PAGEL  
 2  $\mu$ L / Lane (Verification of blotting efficiency)  
 4  $\mu$ L / Lane (Verification of separation )

## 6. Storage

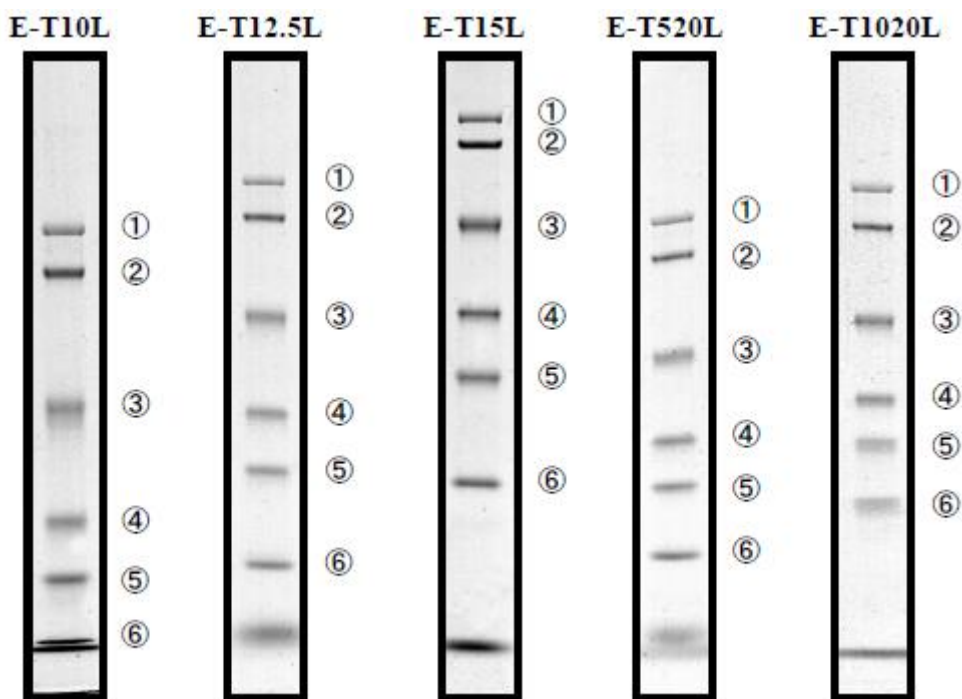
Usable till mentioned date on the label ( at -20°C storage).

## 7. Volume of content 300 $\mu$ L

Proteins	Estimated molecular weight
① $\beta$ -Galactosidase	114,000
② Serum Albumin	84,700
③ Ovoalbumin	47,300
④ Carbonic anhydrase	31,300
⑤ Trypsin inhibitor	25,700
⑥ Lysozyme	17,400

## 6. Patterns

\*Patterns of EzStandard Prestain Blue in diverse gel concentration of e-PAGEL



\*Conditions for sample patterns

Chamber : AE-6531P pageRun  
 Gel : e-PAGEL  
 Current : 20mA  
 Buffer : AE-1410 EzRun  
 Apply volume : 5  $\mu$ L / Lane



AE-6531 PageRun with e-PAGEL



AE-1410 EzRun

* 1	E-T10L	10% Gel
	E-T12.5L	12.5% Gel
	E-T15L	15% Gel
	E-T520L	5-20% Gradient Gel
	E-T1020L	10-20% Gradient Gel

* 2	Component of EzRun
	Tris 25mM
	Glycine 192mM
	SDS 0.1 % (w/v)



**ATTO CORPORATION**  
 3-2-2 Motoasakusa, Tel +81 3 5827 4863  
 Taito-ku Fax +81 3 5827 6647  
 Tokyo 111-0041 E-mail: eig@atto.co.jp  
 Japan http://www.atto.co.jp

Distributed by: