

***ATTO*** AE-1440  
***E<sub>z</sub> Standard***



## Caution for safety use of this product

•For safety use of this product, please read this instruction manual thoroughly. Please do not use this products until fully understand the contents of this instruction manual adequately before using. Please note that this instruction manual provides only the methods to apply this product to the intended purpose. Please do not use this product for purposes/by methods not described in this instruction manual. If it is used for a purpose/by a method not described in this instruction manual, the user shall assume all responsibilities for taking necessary safety measures and dealing with unexpected circumstances.

## Purpose of Use

EzStandard is a molecular weight marker for SDS-PAGE according to *Laemmli* method. The amount of each purified protein has been prepared to give bands of equal intensity when stained with Coomassie Brilliant Blue.

**Configuration** Solution, solubilized in SDS sample buffer, reduced.

## Buffer composition

•Glycerol 35% (v/v)	•DTT 50mM
•SDS 2% (w/v)	•EDTA 2mM
•Tris 10mM	•BPB 0.005% (w/v)

**Direction of Use** Dissolved it by warming with hand and apply appropriate sample volume referring to the table. After use it, please keep in a freezer.

Protein	Source	MW (kDa)	μg/3μL
Phosphorylase b	rabbit muscle	97.2	0.21
Albumin	bovine serum	66.4	0.3
Ovalbumin	chicken egg white	45.0	0.48
Carbonic anhydrase	bovine erythrocyte	29.0	0.3
Trypsin inhibitor	soybean	20.1	0.3
α-Lactalbumin	bovine milk	14.3	0.36

**Apply quantity** Well size 4.2mm

PAGEL/e-PAGEL (PAGEL/e-PAGEL) 12 well • 14 well  
3μL/Lane ( ATTO CBB:EzStain Aqua AE-1340 )  
0.5μL/Lane ( ATTO EzStain Silver AE-1360 )

Width of well 2.9mm

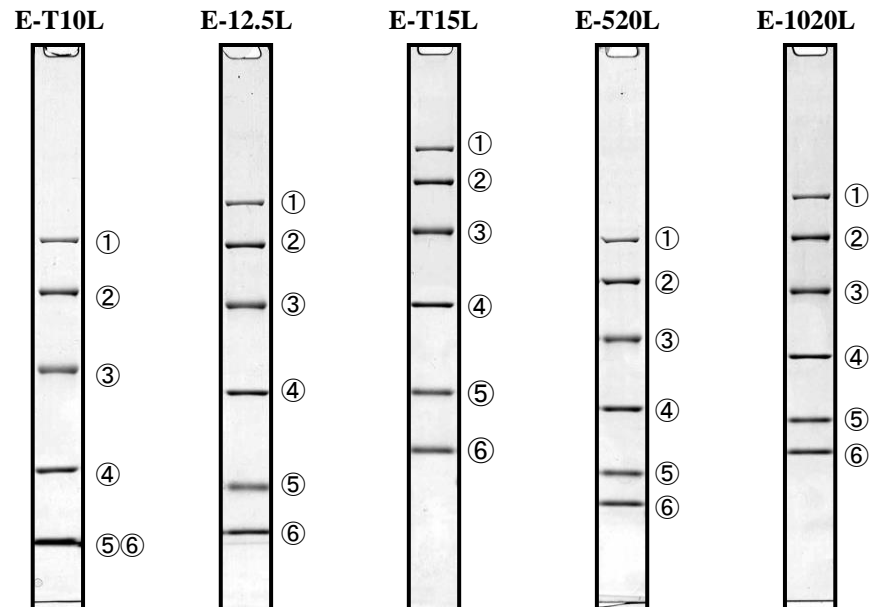
PAGEL/e-PAGEL 18 well  
c-PAGEL (c-PAGEL)  
2μL/Lane ( ATTO CBB:EzStain Aqua AE-1340 )  
0.5μL/Lane ( ATTO EzStain Silver AE-1360 )

**Expiry date** Refer a lable (Storage at -20°C)

**Capacity** 500μL

## Electrophoresis pattern

Ez Standard's electrophoresis pattern by each e-PAGEL of density.



### Condition

Electrophoresis	ATTO pageRun (PAGE Run AE-6531P)
Gel type	ATTO e-PAGEL (Precast gel)* <sup>1</sup>
Set	Constant current 20mA
Buffer	ATTO EzRun* <sup>2</sup> (EzRun AE-1410)
Apply quantity	3μL / Lane
Stain	Coomassie Brilliant Blue

* <sup>1</sup> E-T10L	10% gel
E-T12.5L	12.5% gel
E-T15L	15% gel
E-T520L	5-20% Gradient gel
E-1020L	10-20% Gradient gel

* <sup>2</sup> EzRun component	
Tris	25mM
Glycine	192mM
SDS	0.1% (w/v)