

Stripping reagent WSE-7240 EzReprobe

EzReprobe is available for following situation.

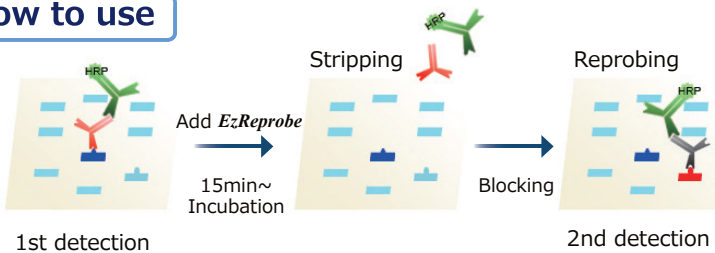
- ◎ Amount of sample is limited
 - ◎ A number of antibodies are detected with one piece of membrane
 - ◎ Signal is not detected, so antibody reaction is retried
(Ex., diluting antibody rate is not suitable etc.)
- ⇒ **Reuse the same membrane with *EzReprobe* !**



EzReprobe

EzReprobe is also recommended for the situation that antibody is left by conventional method!

How to use

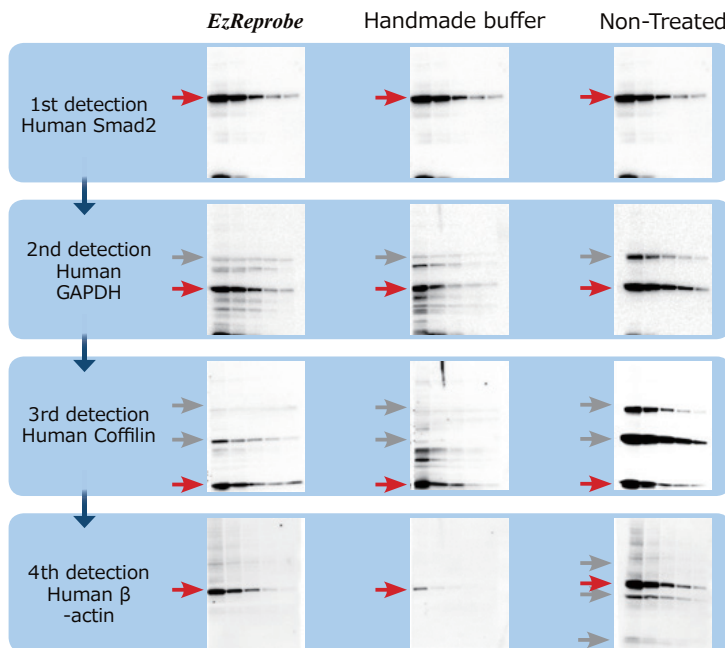


1. Immerse membrane after detection in *EzReprobe* solution and shake it to incubate for 15min~^{※1,2} at room temperature.

※ 1 Incubation time depends on antibody titer.
 ※ 2 If antibody titer is high or antibody is difficult to come off, extend incubation time.

2. After using wash buffer, perform the step after blocking for antibody reaction.

High SN ratio data is repeatedly detected from identical membrane!



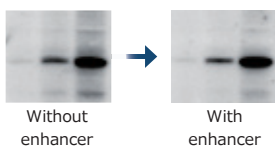
Even rabbit monoclonal antibody having high antibody titer can be peeled off beautifully with *EzReprobe*. Also, denaturation of antigen is minimized so high SN ratio data is repeatedly detected from identical membrane.

At the data of 4th detection, human β -actin is specifically detected with *EzReprobe*. There is no nonspecific reaction and afterimage at 1st ~ 3rd detection.

※ Handmade buffer (refer to Kaufmann *et al.*, 1987) is shaken for 30min at 50°C, and *EzReprobe* is shaken for 10min at room temperature for incubation.

Tips

Stripping effect increases by enhancer.



- If antibody having high antibody titer is stripped, attached enhancer is recommended to use.

- With enhancer, not only stripping effect increases but also high SN ratio data whose back ground is reduced is provided.

Product	WSE-7240 EzReprobe
Code	2332530
Volume/Package	EzReprobe reagent: 500mL, 1 bottle Enhancer(Powder): 3g
Use	Mix 100mL of EzReprobe with 0.6g of enhancer
Main component	Buffer, Surfactant
Storage	At room temperature for 1 year



ATTO Corporation

Providing research solutions for Biochemistry/
 Molecular Biology/Genetic engineering development
 Head Office: 3-2-2 Motoasakusa, Taito-ku, Tokyo,
 111-0041 JAPAN
 TEL: 81-3-5827-4863 FAX: 81-3-5827-6647
 Email: eig@atto.co.jp