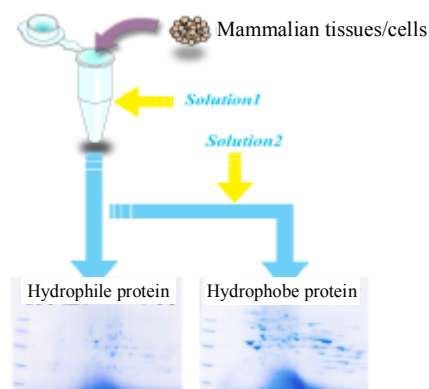


REAGENTS *EzApply2DKit*

Sample Preparation Kit for 2-D Electrophoresis



AE-1435 *EzApply2DKit*



Code No.	Type	Name	Quantity	Shipping	Storage
2332335	AE-1435	<i>EzApply2DKit</i>	1 set	-20°C (refrigerable)	-20°C

*: Shipped frozen. Temporal refrigeration does not affect the quality.

Purpose of Use

EzApply 2D Kit is designed to extract proteins from mammalian tissues/cells in a serial manner and prepare samples for 2-D electrophoresis.

Features

- Separate extraction allows higher protein concentration per gel, facilitating easy detection.
- Reducing reagent, alkylating reagent, washing buffer and stratified solutions are also incorporated into a kit
- Low running cost, while allowing short-time extraction and easy sample preparation
- Combination use with AE-1430*EzApply* (sample preparation kit for SDS-PAGE) makes it applicable to SDS-PAGE as well as 2-D electrophoresis.

Specifications

Type / name	AE-1435 <i>EzApply2DKit</i>	
Major components	Wash buffer Solution 1 Solution 2 Alkylated reagent Stratified solutions	Tris, NaCl Tris, Ampholine , DTT Urea, thiourea, surfactant, Ampholine , DTT Acrylamide, BPB Urea
Manner of package	Solution/30 mL bottle x 2 Solution/20 mL bottle Solution/10 mL bottle Solution/1 mL tube Solution/500 µL tube Powder/tube	(Wash Buffer) (Solution 1) (Solution 2) (Alkylated reagent) (Stratified solution) (DTT)
Method of use	Appropriate amount of solution is applied to tissues or cells, which were lysed and extracted.	
Applicable amount	Extracted from 100 mg of mammalian tissue 20 runs.	
Storage period	Frozen at -20°C for 6 months (before dissolved with DTT) or 1 week after dissolved with DDT	