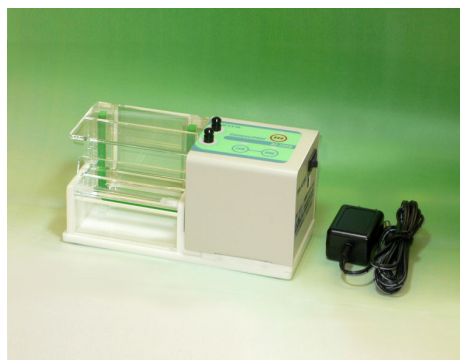
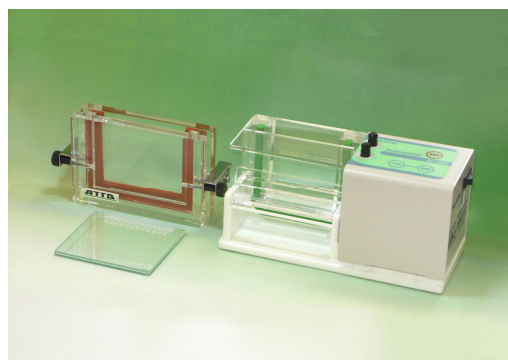


Compact-Size Electrophoresis System

AE-7350 cPAGE



AE-7350W

AE-7350

Code No.	Type	Name	Note
2322261	AE-7350W	cPAGE (100-240V)	Consisting of an electrophoresis chamber and power supply (100-240V), a compact gel cast apparatus (1 pair of glass plates, and one 12-well comb)
2322260	AE-7350	cPAGE Chamber (100-240V)	Without gel caster, plates, and combs

Specifications

Name	AE-7350W cPAGE (for hand-cast gel)	AE-7350 cPAGE (for hand-cast/precast gel)
Plate size	76 (W) x 70 (L) x 4.8 (D) mm	
Gel size	60 (W) x 60 (L) x 0.75 (D) mm	
Number of gels	1 gel	
Plate setting	Pressure by plate holder	
Buffer volume	55 mL for upper chamber, 30 mL for lower chamber	
Material	Chamber: Acrylic plastic and silicone Comb: Poly vinyl chloride (PVD); Plates: Glass	
Sample comb	0.75 mm, 12 wells, up to 8 μ L/well	
Integrated power supply		
Mode	2 preset modes for constant current, High/Low (Time and current are already programmed)	
Protection	Open and short circuit detection	
Alarm	Timed up, open/short	
Dimensions	170 (W) x 74 (D) x 85 (H) mm, 0.5 kg (without accessories)	
Power requirement	AC100-240V 50/60Hz 12VA	
Component	Compact Gel Caser	—

Features

- Fast
- Simple operation
- Amount of buffer solution is about 85mL per run of electrophoresis

[2322265] cPAGE Chamber for AE-7350

[2322600] Power supply module for AE-3750 (100-240V)

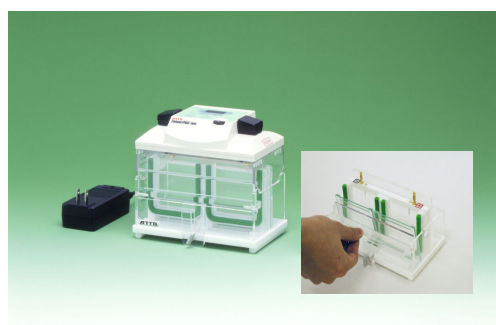
[2322600] AC adaptor for AE-3750 (100-240V)

Compact-Size Electrophoresis System

AE-7341 cPAGE Twin



AE-7341



AE-7341N

Code No.	Type	Name	Note
2321810	AE-7341	cPAGE Twin	Consisting of an electrophoresis chamber, a power supply module, an AC adapter, a multi gel cast apparatus (2 pairs of glass plates, a dummy plate, 3 divider plates, and two 12-well combs.)
2321800	AE-7341N	cPAGE Twin Chamber	Without gel caster, plates, and combs

Specifications

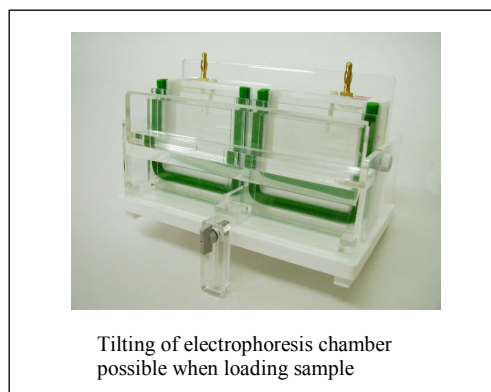
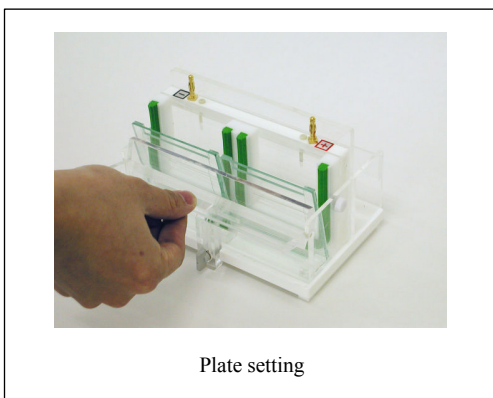
Name	AE-7341 cPAGE Twin (for hand-cast gel)	AE-7341N cPAGE Twin (for hand-cast/ precast gel)
Plate size	76 (W) x 70 (L) x 4.8 (D) mm	
Gel size	60 (W) x 60 (H) x 0.75 (D) mm	
Number of gels	Up to 2 gels	
Plate setting	With pressure plate	
Buffer volume	100 mL for upper chamber, 40 mL for lower chamber	
Material	Casing of power supply module: Acrylonitrile-butadiene-styrene (ABS) resin, polycarbonate Chamber: Acrylic plastic and silicone Comb: Poly vinyl chloride (PVC); Plates: Glass	
Sample comb	0.75 mm, 12 wells, up to 8 μ L/well	
Power supply module	Mode: 4 preset modes for constant current, Tris-Gly/PAGEL, 1 gel/2 gels (Time and current are already programmed) Output: Up to 280 V Protection: Open and short circuit detection Timer: 1 - 200 minutes, displaying elapsed time Alarm: Timed up, and error detection (open / short)	
Dimensions	170 (W) x 100 (D) x 151 (H) mm excluding AC adapter, 0.86 kg (without accessories)	
AC adapter	Input: 90 - 240 VAC, 50/60Hz Output: 24 VDC, 0.7 A Dimensions: 100 (D) x 65 (W) x 31 (H) mm	
Component	Multi Compact Gel Caster	—

Compact-Size Electrophoresis System

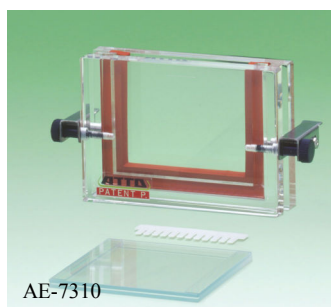
AE-7341 cPAGE Twin

Features

- Runs 2 compact-size gels at once
- Electrophoresis time is just 30 minutes
- Preparation and staining/decolorization in a short time
- Easy operation after conditions are entered

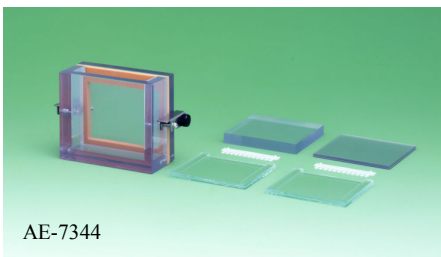


Compact Gel Caster/Multi Compact Gel Caster



Preparations complete just by loading the electrophoresis gel plate in the box-shaped main unit. Afterwards, if the monomer is poured in, gels of uniform thickness can be prepared by anyone.

Specifications



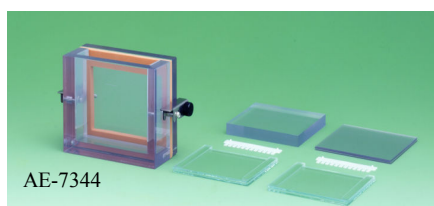
Name	Compact Gel Caster	Multi Compact Gel Caster
Plate size	76 (W) x 70 (L) x 4.8 (D) mm	
Gel size	60 (W) x 60 (H) x 0.75 (D) mm	
Number of gels	1 gel	Up to 2 gels (standard) or 4 gels (option)
Material	Acrylic plastic, silicone, stainless steel except glass for plates and poly vinyl chloride (PVC) for comb	PVC, silicone, stainless steel except glass for plates. And poly vinyl chloride (PVC) for comb, dummy plate, and divider plate
Sample comb	0.75 mm, 12 wells, up to 8 microL/well	
Dimensions	30 (W) x 76 (D) x 130 (H) mm, 0.25 kg (without glass plates)	48 (W) x 76 (D) x 130 (H) mm, 0.45 kg (without glass plates)

[2393632] 0.75 mm Compact Gel Cast
For single gel casting. Including 1 set of glass plates and 1 comb
[2322602] 0.75 mm Compact Multi Gel Cast
Including 2 pairs of glass plates, 2 combs, 3 divider plate, and 1 dummy plate. Ready to cast 2 12-well gels

[2393633] Compact Gel Cast
[2322600] Compact Multi Gel Cast
Without plate and comb

Compact-Size Electrophoresis System

AE-7340 cPAGE Twin



Code No.	Type	Name	Note
2322552	AE-7340	cPAGE Twin	Consisting of an electrophoresis chamber, a safety lid, a multi gel cast apparatus (2 pairs of glass plates, a dummy plate, 3 divider plates, and two 12-well combs)
2322550	AE-7340	cPAGE Twin Chamber	Without gel caster, plates, and combs

Specifications

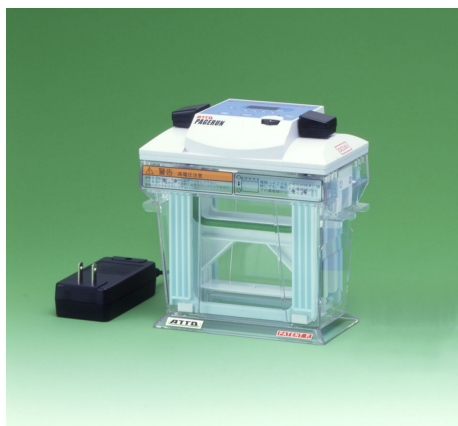
Name	AE-7340 cPAGE Twin (for hand-cast gel)	AE-7340N cPAGE Twin Chamber (for precast gel)
Plate size	76 (W) x 70 (L) x 4.8 (D) mm	
Gel size	60 (W) x 60 (H) x 0.75 (D) mm	
	Up to 2 gels	
Plate setting	With pressure plate	
Buffer volume	100 mL for upper chamber, 40 mL for lower chamber	
Material	Casing of power supply module: Acrylonitrile-butadiene-styrene (ABS) resin, polycarbonate Chamber: Acrylic plastic and silicone Comb: Poly vinyl chloride (PVC); Plates: Glass	
Sample comb	0.75 mm, 12 wells, up to 8 μ L/well	
Dimensions	170 (W) x 100 (D) x 112 (H) mm 0.69 kg (without accessories)	

Features

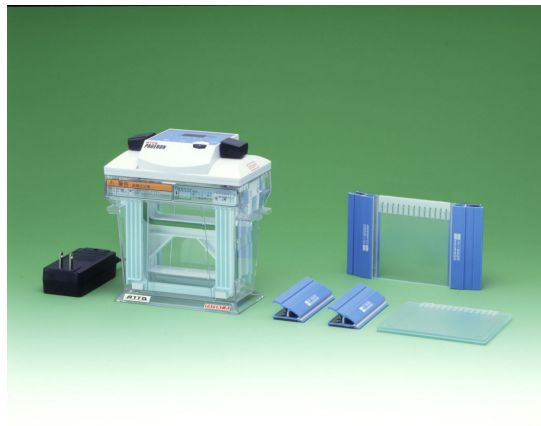
- This model has the AE-7340 power module changed to a safety cover (with lead wire)
- For a list of specifications, options, and expendables, please refer to the AE-7341

Mini-Slab Size Electrophoresis System

AE-6531 mPAGE (pageRun)



AE-6531M/P mPAGE



AE-6531MW mPAGE

Code No.	Type	Name	Note
2321951	AE-6531MW	mPAGE	Including 2 gel holders (for hand-cast gels), a 7 mm dummy plate (for running 1 gel only), and a set of 1 mm Dual Mini Gel Cast.
2321950	AE-6531M	mPAGE	Including 2 gel holders (for hand-cast gels) and a 7 mm dummy plate.
2321952	AE-6531P	mPAGE	Including 2 gel holders and a 5 mm dummy plate for using Pagel precast gels.
2393010	1mm Dual Mini Gel Cast		2 pairs of glass, 2 gaskets, 4 clips, and 2 Combs, Ready to Cast 2 of 1 mm, 12 well gels.

Specifications

Name	AE-6531MW/M mPAGE (for hand-cast gel)	AE-6531P mPAGE (for precast gel)
Plate size	120 (W) x 102 (L) x 7 (D) mm	120 (W) x 100 (L) x 5 (D) mm Compatible with e-Pagel precast gel
Gel size	90 (W) x 80 (H) x 1 (D) mm	90 (W) x 83 (H) x 1 (D) mm
Gel holder	For hand-cast gels	For Pagel precast gels
Dummy plate	7 mm in thickness	5 mm in thickness
Number of gels	Up to 2 gels	
Plate setting	One-touch sealing	
Buffer volume	80 mL for upper chamber, 420 mL for lower chamber	
Material	Casing of power supply module: Acrylonitrile-butadiene-styrene (ABS) resin Chamber: Polycarbonate and silicone	
Electrode	Automatic polarity control (Upper chamber: cathode; lower chamber: anode)	
Power supply module	Mode: Constant current, 10, 20, 30, or 40 mA Output: 30 - 280 V, 12W maximum Protection: Open and short circuit detection Timer: 1 - 200 minutes/continuous, displaying elapsed time Alarm: Timed up, and error detection (open / short circuit)	
Dimensions	164 (W) x 94 (D) x 193 (H) mm excluding AC adapter, 0.74 kg (without accessories)	
AC adapter	Input: 90 - 240 VAC, 50/60Hz Output: 24 VDC, 0.7 A Dimensions: 100 (D) x 65 (W) x 31 (H) mm	

- Differences between AE-6531M and AE-6531P are plate holders and thickness of dummy plate. Other parts and components are identical.
- AE-6531 consists of AE-6530 excluding a safety lid with power leads and a power supply module.
- Automatic polarity control function makes cathode for upper chamber and anode for lower chamber ALL THE TIME. If you need to order a unit with this function cancelled, please contact your local distributor.
- Universal 90 - 240 V AC adapter is included.

Mini-Slab Size Electrophoresis System

AE-6531 mPAGE (pageRun)

Features

- Clear electrophoresis patterns can be easily obtained by anyone without fail
- Electricity conditions are preset
- Reduced space
- With a polarity auto-switching feature so that the lower electrode is always + regardless of the direction in which the power source is connected
- Simple loading just by placing the electrophoresis plate on the plate holder, matching it with the electrophoresis chamber (the upper chamber), and pushing it in with a click
- Prevents leakage of buffer solution with flexible material in a special wave shape; electrophoresis plate and gel are firmly retained
- Temperature is controlled for the electrophoresis plate and gel from both sides with buffer solution and smiling is reduced



Integrated power supply module

Constant current: 10, 20, 30, or 40 mA
Equipped with safety function and timer.

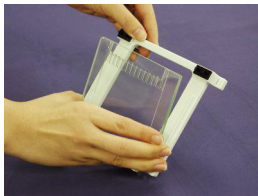
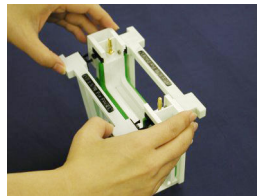
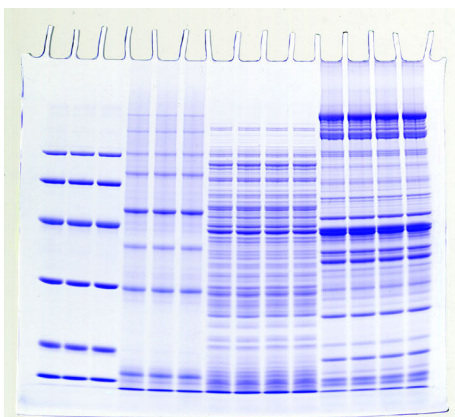


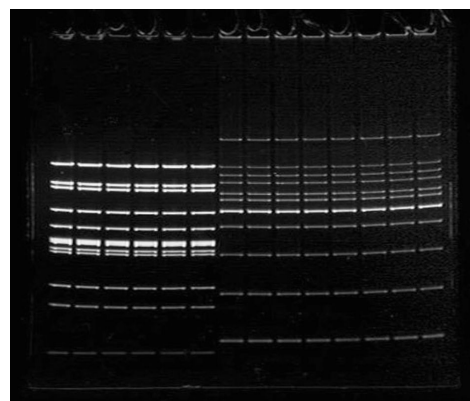
Plate setting



One-touch sealing



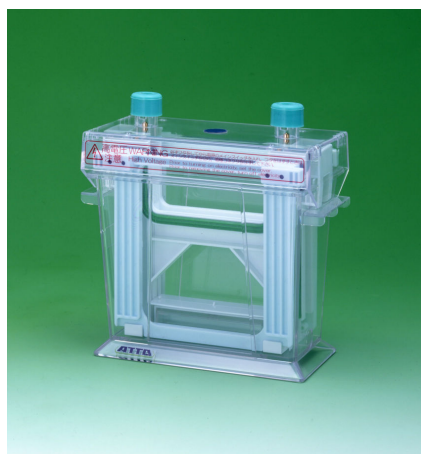
Protein SDS-PAGE



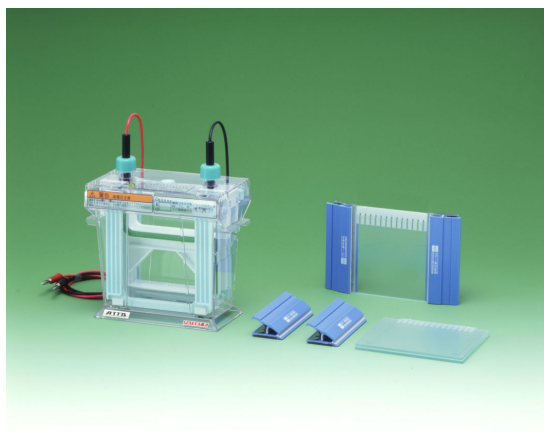
DNA PAGE

Mini-Slab Size Electrophoresis System

AE-6530 mPAGE



AE-6530M/P mPAGE



AE-6530MW mPAGE

Code No.	Type	Name	Note
2321915	AE-6530MW	mPAGE	Including 2 gel holders (for hand-cast gels), a 7 mm dummy plate, and a set of 1 mm Dual Mini Gel Cast
2321900	AE-6530M	mPAGE Chamber	Including 2 gel holders (for hand-cast gels), a 7 mm dummy plate
2321905	AE-6530P	mPAGE Chamber	Including 2 gel holders (for precast gels), a 5 mm dummy plate
2393010	1mm Dual Mini Gel Cast		2 pairs of glass, 2 gaskets, 4 clips, and 2 Combs. Ready to Cast 2 of 1 mm, 12 well gels.

- This model has the AE-6531 power module changed to a safety cover (with lead wire). For a list of specifications, options, and expendables, please refer to the AE-6531.

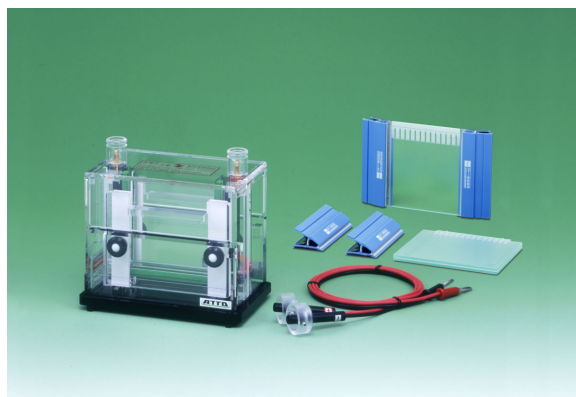
Specifications

Name	AE-6530MW/M mPAGE Chamber (for hand-cast gel)	AE-6530P mPAGE Chamber (for precast gel)
Plate size	120 (W) x 102 (L) x 7 (D) mm	120 (W) x 100 (L) x 5 (D) mm Compatible with e-Pagel precast gel
Gel size	90 (W) x 80 (H) x 1 (D) mm	90 (W) x 83 (H) x 1 (D) mm
Number of gels	Up to 2 gels	
Plate setting	One-touch sealing	
Buffer volume	80 mL for upper chamber, 420 mL for lower chamber	
Material	Polycarbonate and silicone	
Electrode	Automatic polarity control (Upper chamber: cathode; lower chamber: anode)	
Dimensions	164 (W) x 94 (D) x 154 (H) mm, 0.6 kg (without accessories)	

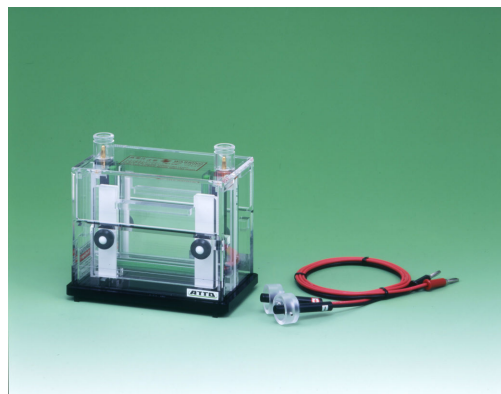
- Differences between AE-6530M and AE-6530P are plate holders and thickness of dummy plate. Other parts and components are identical.
- AE-6530 consists of upper and lower chambers and gel holders of AE-6531, and a safety lid with power leads.
- Automatic polarity control function makes cathode for upper chamber and anode for lower chamber ALL THE TIME. If you need to order a unit with this function cancelled, please contact your local distributor.

Mini-Slab Size Electrophoresis System

AE-6450 Dual Mini Slab Kit



AE-6450 Dual Mini Slab Kit



AE-6450 Dual Mini Slab Chamber

Code No.	Type	Name
2322222	AE-6450	Dual Mini Slab Kit
2322190	AE-6450	Dual Mini Slab Chamber
2393010		1mm Dual Mini Gel Cast

Specifications

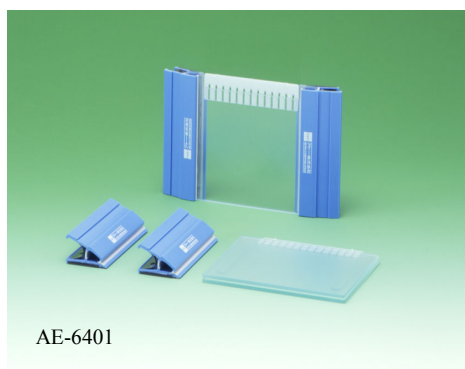
Name	AE-6450 Dual Mini Slab Kit	AE-6450 Dual Mini Slab Chamber
Plate size	120 (W) x 102 (L) mm, 7 mm in thickness (for hand-cast gels) Option: 2 mm Thickener Plate for e-Pagel precast gels	
Gel size	90 (W) x 80 (H) mm	
Number of gels	Up to 2 gels	
Plate setting	With pressure platen	
Temperature control	Single face	
Buffer volume	140 mL for upper chamber, 200 mL for lower chamber	
Cover lid	Safety lid with lead wires	
Material	Acrylic plastic	
Dimensions	163 (W) x 86 (D) x 144 (H) mm, excluding power leads, 1.6 kg (without accessories)	
Complete with:	1 electrophoresis chamber incl. a safety cover with power leads and 2 pressure plates + 2 pairs of glass plates + 2 gaskets + 4 clips + 2 combs. Ready to cast & run 2 1-mm 12-well gels	1 electrophoresis chamber incl. a safety cover with power leads and 2 pressure platens

Features

- High-quality, best-seller model
- Simple specifications
- Gel plates are easily set with the special plate holder
- Temperature control of plates and specially designed combs to prevent smiling

Mini-Slab Size Electrophoresis System

AE-6450 Dual Mini Gel Cast



AE-6401

Gels can be easily prepared with a special seal gasket and clips.

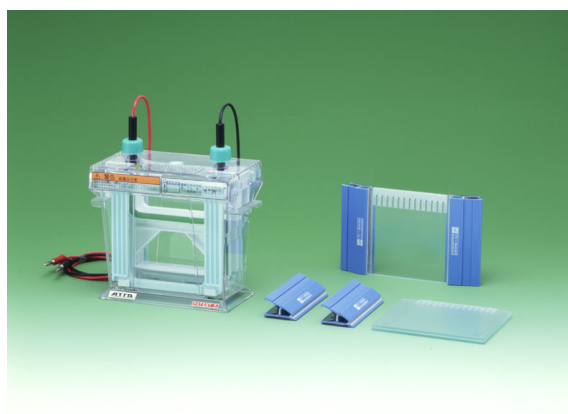
Specifications

Name	1 mm Dual Mini Gel Cast	0.75 mm Dual Mini Gel Cast
Plate size	120 (W) x 102 (L) mm	
Gel size	90 (W) x 80 (H) mm x 1 (D) mm	90 (W) x 80 (H) mm x 0.75 (D) mm
Sample comb	1 mm, 12-well comb	0.75 mm, 12-well comb
Complete with:	2 pairs of glass plates, 2 gaskets, 4 clips, and 2 combs. Ready to cast two 1-mm 12-well gels	2 pairs of glass plates, 2 gaskets, 4 clips, and 2 combs. Ready to cast two 0.75-mm 12-well gels

[2393010] 1 mm Dual Mini Gel Cast

[2393012] 0.75 mm Dual Mini Gel Cast

2 pairs of glass plates, 2 gaskets, 4 clips, and 2 combs. Ready to cast two 1-mm or 0.75-mm 12-well gels



AE-6530MW (2321915)

Option

Code No.	Name	Note
2398269	1 mm 12-well Combs 2/pk, RM	
2328375	1 mm 6-well Comb, RM	
2328376	1 mm 8-well Comb, RM	
2328422	1 mm 20-well Comb, RM	
2398255	1 mm 21-well Combs 2/pk, RM	
2399041	1 mm Blank Comb, RM	
2328934	1 mm Preparative Comb, RM	1 sample well + 1 reference well
	1 mm special well comb - Consult	
2328948	1 mm 10-well Comb, RM	
2398247	7 mm Dummy Plate, AE-6450	Plastic plate for running 1 gel only
2331140	2 mm Thickener Plate, AE-6450	Plastic plate to accommodate an e-Pagel precast gel

- Please contact your local distributor for further information on special combs.
- Plate thickness for the notch-shaped plates in the RM-22 plate set for 2-mm specifications and MAB-22 electrophoresis plates is 1 mm thinner than usual. Thus, total plate thickness when combined with the MB-00 electrophoresis plate is the same as for 1 mm specifications.

Mini-Slab Size Electrophoresis System

AE-6510 Resolmax Mini Slab



Resolmax Mini Slab

- Consists of AE-6510 Resolmax Mini Slab Chamber (2393700), 0.75-mm 12-well Dual Mini Gel Cast (2393012) and (2322231) or (2322232) AE-6370 TempCon (110 or 230 V). Complete to cast 2 0.75-mm 12-well gels, and to connect a water circulation bath. To run 2 gels.

Code No.	Type	Name	Note
2322186	AE-6510	Resolmax [®] Mini Slab, 110V	
2322187	AE-6510	Resolmax [®] Mini Slab, 230V	
2322184	AE-6510	Resolmax [®] Mini Slab	Without AE-6370 TempCon

Features

- Two channels, two-sided temperature control
- Upper and lower buffer circulation possible
- Gel size: 90 x 80 mm, 0.75 mm in thickness
- Number of samples: Up to 12 / gel

Specifications

Name	AE-6510 ResolMax Mini Slab
Plate size	120 (W) x 102 (L) mm for hand-cast gel (120 (W) x 100 (L) mm for e-Pagel precast gel)
Gel size	90 (W) x 80 (L) mm for hand-cast gel (90 (W) x 73 (L) mm for e-Pagel precast gel)
Gel thickness	0.75 mm (standard) or 1 mm (option)
Sample Comb	Standard: 0.75 mm 12-well smilingless comb
Number of gels	Up to 2 gels
Operating temperature	5 - 70 degC
Buffer volume	80 mL for upper chamber, 420 - 520 mL for lower chamber
Timer	0.1 second - 9990 hours
Material	Polycarbonate, hard glass for heat exchanger, and silicone for tubings.
Dimensions	Chamber: 164 (W) x 94 (D) x 154 (H) mm, 0.6 kg (excluding plate set) Heat exchanger: 138 (W) x 200 (D) x 274 (H) mm, 3.2 kg

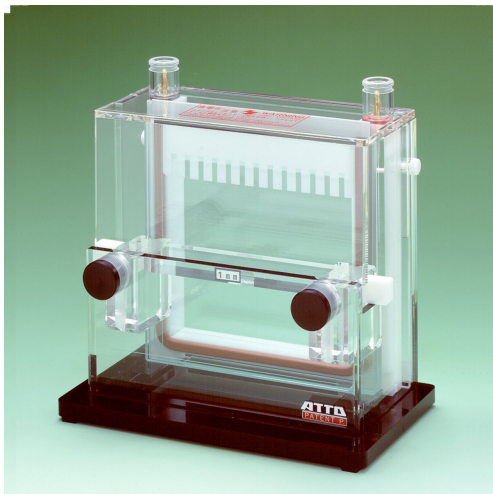
Related Products



Code No.	Type	Name
3521210	AB-1600	SuperStat Mini, 100V
3521211	AB-1600	SuperStat Mini, 110V
3521212	AB-1600	SuperStat Mini, 230V

Slab Size Electrophoresis System

AE-6200 Slab EP Chamber



AE-6200 Slab EP Chamber

- Including a safety cover, a pair of power leads, and a pressure platen. Ready to run 1 gel.
- Combs and plates are not included. Please use with AE-6210 Slab Gel Cast.

Code No.	Type	Name
2392044	AE-6200	Slab EP Chamber

Features

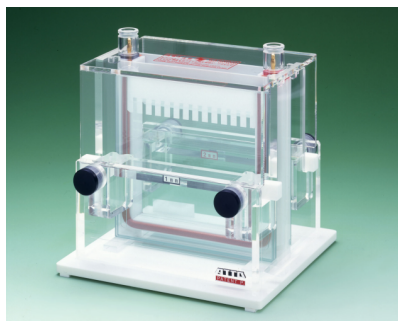
- Simple specifications, so samples are easily seen during addition and it is always clean since cleaning is easy
- Safe operation with a safety cover with lead wire without using metal clips
- Various combs are available

Specifications

Name	AE-6200 Slab EP Chamber
Plate size	160 (W) x 160 (L) x 10.5 - 12 (T) mm
Gel size	138 (W) x 130 (H) mm For gel thickness of 0.5 - 2.0 mm
Number of gels	1 gel
Plate setting	With pressure platen
Temperature control	Single face
Buffer volume	300 mL for upper chamber, 350 mL for lower chamber
Cover lid	Safety lid with lead wires
Material	Acrylic plastic and stainless steel
Dimensions	214 (W) x 121 (D) x 188 (H) mm, excluding power leads, 1.6 kg (without accessories)
Complete with:	1 electrophoresis chamber incl. a safety cover with power leads.

Slab Size Electrophoresis System

AE-6220 Dual Slab Chamber



AE-6220 Dual Slab Chamber

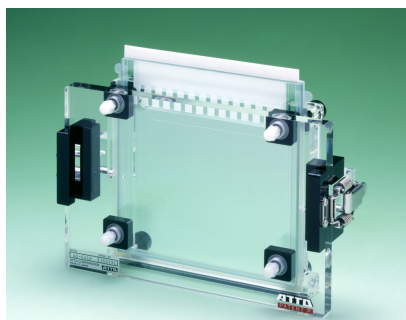
- Including a safety cover, a pair of power leads, two pressure platens. Ready to run 2 gels.
- Combs and plates are not included. Please use with AE-6210 Slab Gel Cast.
- 2-channel model of the AE-6200
- Various combs are available

Code No.	Type	Name
2392085	AE-6220	Dual Slab Chamber

Specifications

Name	AE-6220 Slab EP Chamber
Plate size	160 (W) x 160 (L) x 10.5 - 12 (T) mm
Gel size	138 (W) x 130 (H) mm For gel thickness of 0.5 - 2.0 mm
Number of gels	Up to 2 gels
Plate setting	With pressure platen
Temperature control	Single face
Buffer volume	480 mL for upper chamber, 450 mL for lower chamber
Cover lid	Safety lid with lead wires
Material	Acrylic plastic and stainless steel
Dimensions	211 (W) x 196 (D) x 205 (H) mm, excluding power leads, 2.3 kg (without accessories)
Complete with:	1 electrophoresis chamber incl. a safety cover with power leads.

AE-6210 Slab Gel Cast



AE-6210 Dual Slab Chamber

- Easy gel preparation with specially designed parts and seal gaskets

Specifications

Name	AE-6210 Slab Gel Cast
Plate size	160 (W) x 160 (L) x 10.5 - 12 (T) mm
Gel size	138 (W) x 130 (H) mm For gel thickness of 0.5 - 2.0 mm
Material	Acrylic plastic and stainless steel except silicone rubber for gaskets and glass for plates
Dimensions	250 (W) x 150 (D) x 80 (H) mm, 1.0 kg (without glass plates)

[2392016] AE-6210 Slab Gel Cast, 1-mm 12-well

[2392017] AE-6210 Slab Gel Cast, 2-mm 12-well

Including a pair of glass plates, a gasket, and a comb, ready to cast a 1 or 2 mm, 12-well gel

[2392010] AE-6210 Slab Gel Cast, 1mm

[2392011] AE-6210 Slab Gel Cast, 2mm

Including a pair of glass plates, a gasket, to cast a 2 mm gel, but without comb

[2392012] AE-6210 Slab Gel Cast, Without glass plate, gasket and comb

Slab Size Electrophoresis System

AE-6290 ResolMax Slab



AE-6290

- Composed of AE-6290 Resolmax Slab Chamber (2393069), 2 pcs of (2393071) AE-6210 Slab Gel Cast (0.75-mm 15-well sets), and (2322231) or (2322232) AE-6370 TempCon (110 or 230 V). Complete to cast 2 0.75-mm 15-well gels, to connect AE-6290 electrophoresis chamber, AE-6370 heat exchanger and a water circulation bath (not included), and to run the 2 gels

Code No.	Type	Name	Note
2322206	AE-6290	ResolMax. Slab, 110V	
2322207	AE-6290	ResolMax. Slab, 230V	
2322229	AE-6290	ResolMax. Slab	Without AE-6370 TempCon

Features

- Two channels, two-sided temperature control
 - Upper and lower buffer circulation possible
- Gel size: 138 x 130 mm, 0.75 mm in thickness
 Number of samples: Up to 15

Specifications

Name	AE-6290 ResolMax Slab
Plate size	160 (W) x 160 (L) mm
Gel size	138 (W) x 130 (L) mm
Gel thickness	0.75 mm
Sample Comb	Standard: 0.75 mm 15-well smilingless comb
Number of gels	Up to 2 gels
Operating temperature	5 - 60 °C
Buffer volume	280 mL for upper chamber, 880 - 980 mL for lower chamber
Timer	0.1 second - 9999 hours
Material	Acrylic plastic, except polycarbonate for dummy plate, stainless steel for parts of gel caster, hard glass for heat exchanger, and silicone for tubings.
Dimensions	Chamber: 224 (W) x 112 (D) x 210 (H) mm Gel caster: 250 (W) x 150 (D) x 80 (H) mm, 1.0 kg Heat exchanger: 138 (W) x 200 (D) x 274 (H) mm, 3.0 kg

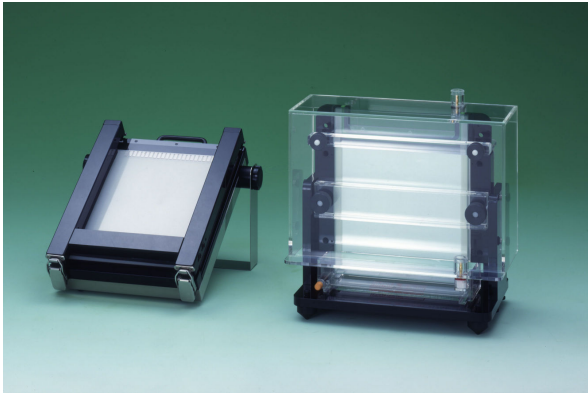
Related Products



Code No.	Type	Name
3521210	AB-1600	SuperStat Mini, 100V
3251211	AB-1600	SuperStat Mini, 110V
3521212	AB-1600	SuperStat Mini, 230V

Sequencer

AE6141 MiniQuencer



AE-6141 miniQuencer

- Equipped with fluorescence-free glass plates
- Normal glass version is also available as option
- Gel size: 180 x 200 mm, 0.5 mm in thickness
- Number of samples: Up to 23

Code No.	Type	Name	Note
2321227	AE-6141	miniQuencer	1 electrophoresis chamber complete with safety lid with power leads, buffer drain tube & cock, water circulation tube & cock, and level gauge, 1 gel casting apparatus, 1 set of fluorescence-free glass plates, 0.5 mm spacer and 0.5 mm 23-well comb, to cast & run a 0.5 mm 23-well gel
2321xxx	AE-6141	miniQuencer, Normal Glass	Same as #2321227, except normal glass plates instead of fluorescence-free glass plates.

Purpose of Use

- DNA sequencing
- Differential display of nucleic acids

Principle

A high resolution can be obtained because the electrophoresis distance is long, gel thickness is thin, and polyacrylamide gel is used. A special aluminum laminate plate is in close contact with the plate, so the entire plate is temperature controlled. With types allowing installation of the water-flow jacket, temperature control of the gel is possible, so it can be used in electrophoresis.

Comes with a special gel preparation device.

Related Products



Code No.	Type	Name
3521210	AB-1600	SuperStat Mini, 100V
3251211	AB-1600	SuperStat Mini, 110V
3521212	AB-1600	SuperStat Mini, 230V